

Montageanleitung

assembly instruction
notice de montage
indicaciones de montaje

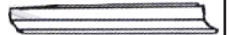
- D** Bevor Sie mit der Montage beginnen, überprüfen Sie bitte den Inhalt auf Vollständigkeit.
- GB** Before you start to assemble it, please ensure that all the following components are provided.
- F** Avant de commencer le montage, veuillez vérifier que vous êtes en possession de tous les éléments suivants.
- E** Antes de comenzar con el montaje, compruebe que todo el contenido está íntegro.



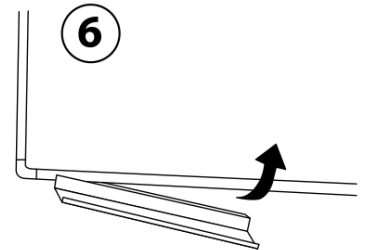
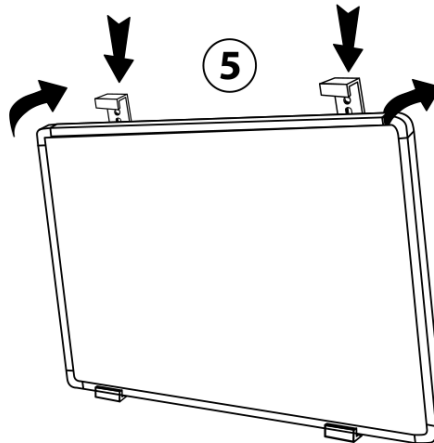
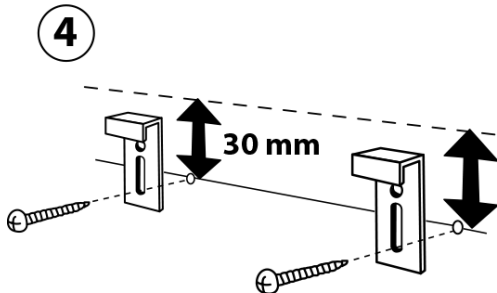
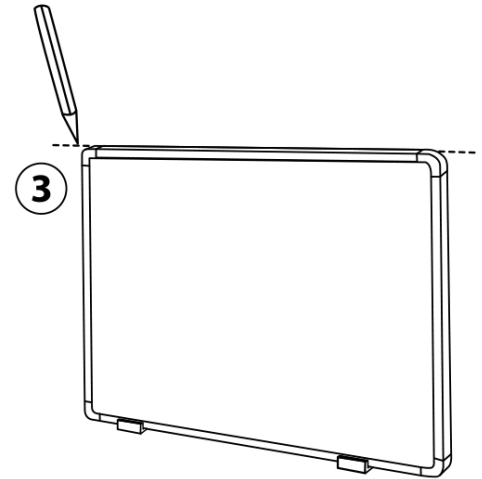
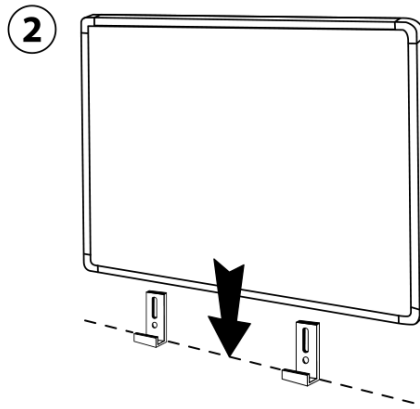
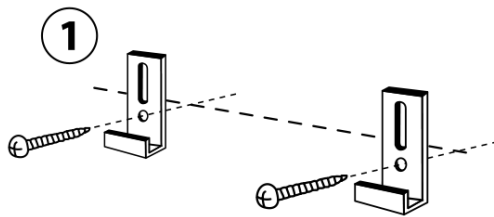
Ref. Nr. A1070/16
= 4 Stk.



Ref. Nr. A1070/17
je 4 Stk.
Ref. Nr. A1070/165 > 180x90cm



Ref. Nr. A1070/18
= 1 Stk.



Franken GmbH
Forumstraße 2
D-41468 Neuss
Service Hotline:
+49 (0) 2131 / 3498 44

Ref. No. SC21*, SC22*, PT23*, KT24*, KR25*, PM26*, RT28*, CB20*
Control No. 105983

FRANKEN

www.franken-gmbh.de